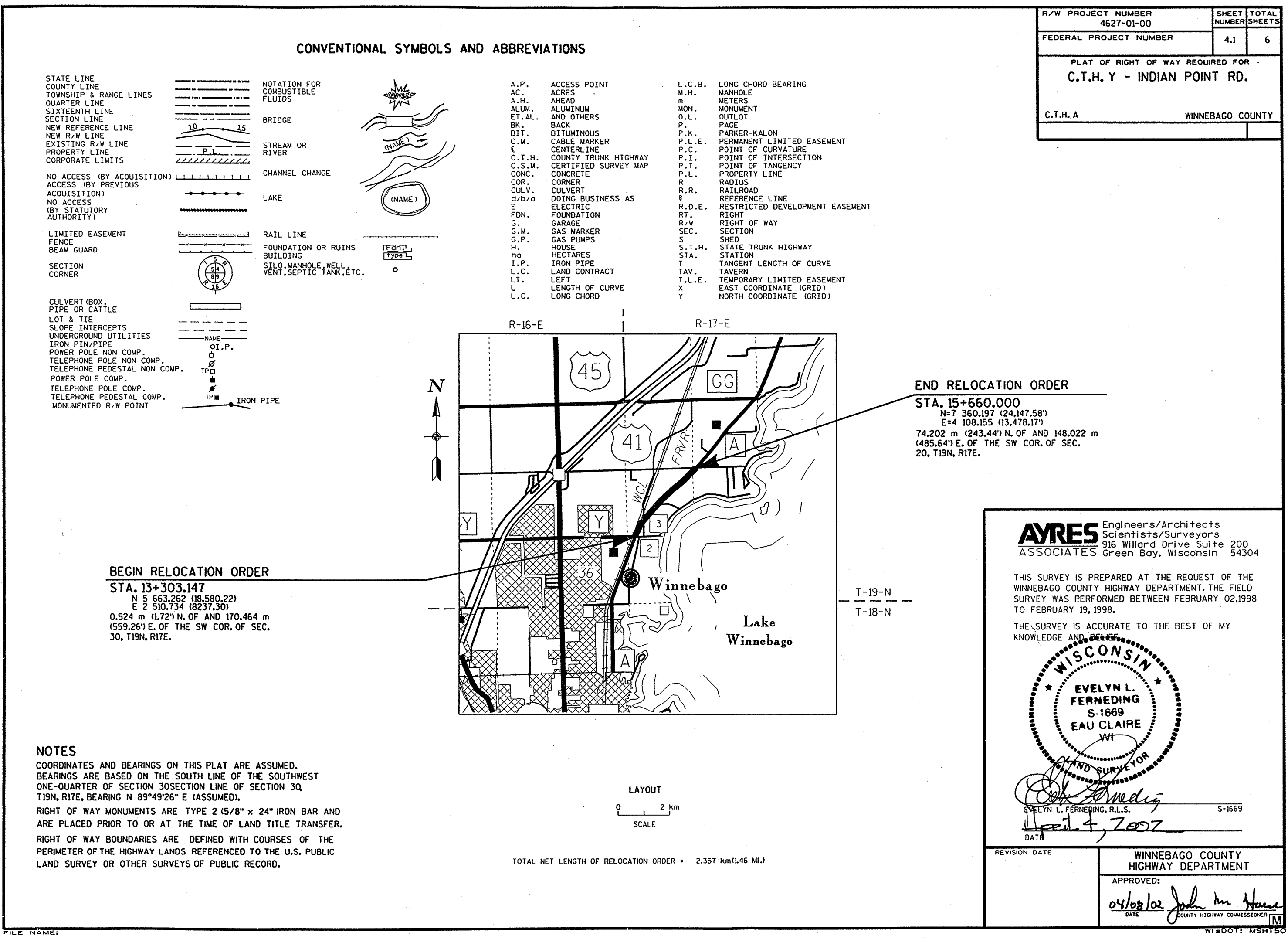


PEN TABLE = #PIOT+LASER+LEVEL.tbl  
 DATE OF PLOT = 3/18/02  
 PLOT NA  
 DGN NA

FILE NAME:  
 SCALE:

DATE:  
 PLOT NAME:

ORIGINATOR:  
 PROJECT NO:



R/W PROJECT NUMBER 4627-01-00	SHEET NUMBER 4.1	TOTAL SHEETS 6
FEDERAL PROJECT NUMBER		
PLAT OF RIGHT OF WAY REQUIRED FOR <b>C.T.H. Y - INDIAN POINT RD.</b>		
C.T.H. A	WINNEBAGO COUNTY	

**CONVENTIONAL SYMBOLS AND ABBREVIATIONS**

- STATE LINE
- COUNTY LINE
- TOWNSHIP & RANGE LINES
- QUARTER LINE
- SIXTEENTH LINE
- SECTION LINE
- NEW REFERENCE LINE
- NEW R/W LINE
- EXISTING R/W LINE
- PROPERTY LINE
- CORPORATE LIMITS
- NO ACCESS (BY ACQUISITION)
- ACCESS (BY PREVIOUS ACQUISITION)
- NO ACCESS (BY STATUTORY AUTHORITY)
- LIMITED EASEMENT
- FENCE
- BEAM GUARD
- SECTION CORNER
- CULVERT (BOX, PIPE OR CATTLE)
- LOT & TIE
- SLOPE INTERCEPTS
- UNDERGROUND UTILITIES
- IRON PIN/PIPE
- POWER POLE NON COMP.
- TELEPHONE POLE NON COMP.
- TELEPHONE PEDESTAL NON COMP.
- POWER POLE COMP.
- TELEPHONE POLE COMP.
- TELEPHONE PEDESTAL COMP.
- MONUMENTED R/W POINT

- A.P. ACCESS POINT
- AC. ACRES
- A.H. AHEAD
- ALUM. ALUMINUM
- ET.AL. AND OTHERS
- BK. BACK
- BIT. BITUMINOUS
- C.M. CABLE MARKER
- CL. CENTERLINE
- C.T.H. COUNTY TRUNK HIGHWAY
- C.S.M. CERTIFIED SURVEY MAP
- CONC. CONCRETE
- COR. CORNER
- CULV. CULVERT
- d/b/o DOING BUSINESS AS
- E. ELECTRIC
- FDN. FOUNDATION
- G. GARAGE
- G.M. GAS MARKER
- G.P. GAS PUMPS
- H. HOUSE
- ha HECTARES
- I.P. IRON PIPE
- L.C. LAND CONTRACT
- LT. LEFT
- L. LENGTH OF CURVE
- L.C. LONG CHORD
- L.C.B. LONG CHORD BEARING
- M.H. MANHOLE
- m METERS
- MON. MONUMENT
- O.L. OUTLOT
- P. PAGE
- P.K. PARKER-KALON
- P.L.E. PERMANENT LIMITED EASEMENT
- P.C. POINT OF CURVATURE
- P.I. POINT OF INTERSECTION
- P.T. POINT OF TANGENCY
- P.L. PROPERTY LINE
- R. RADIUS
- R.R. RAILROAD
- RL. REFERENCE LINE
- R.D.E. RESTRICTED DEVELOPMENT EASEMENT
- RT. RIGHT
- R/W RIGHT OF WAY
- SEC. SECTION
- S. SHED
- S.T.H. STATE TRUNK HIGHWAY
- STA. STATION
- T. TANGENT LENGTH OF CURVE
- TAV. TAVERN
- T.L.E. TEMPORARY LIMITED EASEMENT
- X. EAST COORDINATE (GRID)
- Y. NORTH COORDINATE (GRID)

**BEGIN RELOCATION ORDER**  
 STA. 13+303.147  
 N 5 663.262 (18,580.22)  
 E 2 510.734 (8237.30)  
 0.524 m (1.72') N. OF AND 170.464 m  
 (559.26') E. OF THE SW COR. OF SEC.  
 30, T19N, R17E.

**END RELOCATION ORDER**  
 STA. 15+660.000  
 N=7 360.197 (24,147.58')  
 E=4 108.155 (13,478.17')  
 74.202 m (243.44') N. OF AND 148.022 m  
 (485.64') E. OF THE SW COR. OF SEC.  
 20, T19N, R17E.

**NOTES**

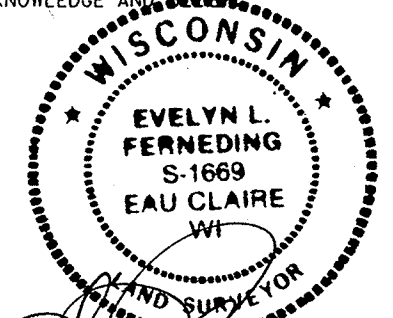
COORDINATES AND BEARINGS ON THIS PLAT ARE ASSUMED. BEARINGS ARE BASED ON THE SOUTH LINE OF THE SOUTHWEST ONE-QUARTER OF SECTION 30 SECTION LINE OF SECTION 30, T19N, R17E, BEARING N 89°49'26" E (ASSUMED).  
 RIGHT OF WAY MONUMENTS ARE TYPE 2 (5/8" x 24" IRON BAR AND ARE PLACED PRIOR TO OR AT THE TIME OF LAND TITLE TRANSFER.  
 RIGHT OF WAY BOUNDARIES ARE DEFINED WITH COURSES OF THE PERIMETER OF THE HIGHWAY LANDS REFERENCED TO THE U.S. PUBLIC LAND SURVEY OR OTHER SURVEYS OF PUBLIC RECORD.

TOTAL NET LENGTH OF RELOCATION ORDER = 2.357 km (1.46 MI.)

**AYRES** Engineers/Architects  
 Scientists/Surveyors  
 916 Willard Drive Suite 200  
 ASSOCIATES Green Bay, Wisconsin 54304

THIS SURVEY IS PREPARED AT THE REQUEST OF THE WINNEBAGO COUNTY HIGHWAY DEPARTMENT. THE FIELD SURVEY WAS PERFORMED BETWEEN FEBRUARY 02, 1998 TO FEBRUARY 19, 1998.

THE SURVEY IS ACCURATE TO THE BEST OF MY KNOWLEDGE AND BELIEF.



*Evelyn L. Ferneding*  
 EVELYN L. FERNEDING, R.L.S. S-1669  
 DATE: April 4, 2007

REVISION DATE

WINNEBAGO COUNTY HIGHWAY DEPARTMENT

APPROVED:  
 04/08/02 *John M. Hansen*  
 DATE COUNTY HIGHWAY COMMISSIONER

# SCHEDULE OF LANDS & INTERESTS REQUIRED

AREAS SHOWN IN THE TOTAL ACRES COLUMN MAY BE APPROXIMATE AND ARE DERIVED FROM TAX ROLLS OR OTHER AVAILABLE SOURCES AND MAY NOT INCLUDE LANDS OF THE OWNER WHICH ARE NOT CONTIGUOUS TO THE AREA TO BE ACQUIRED.

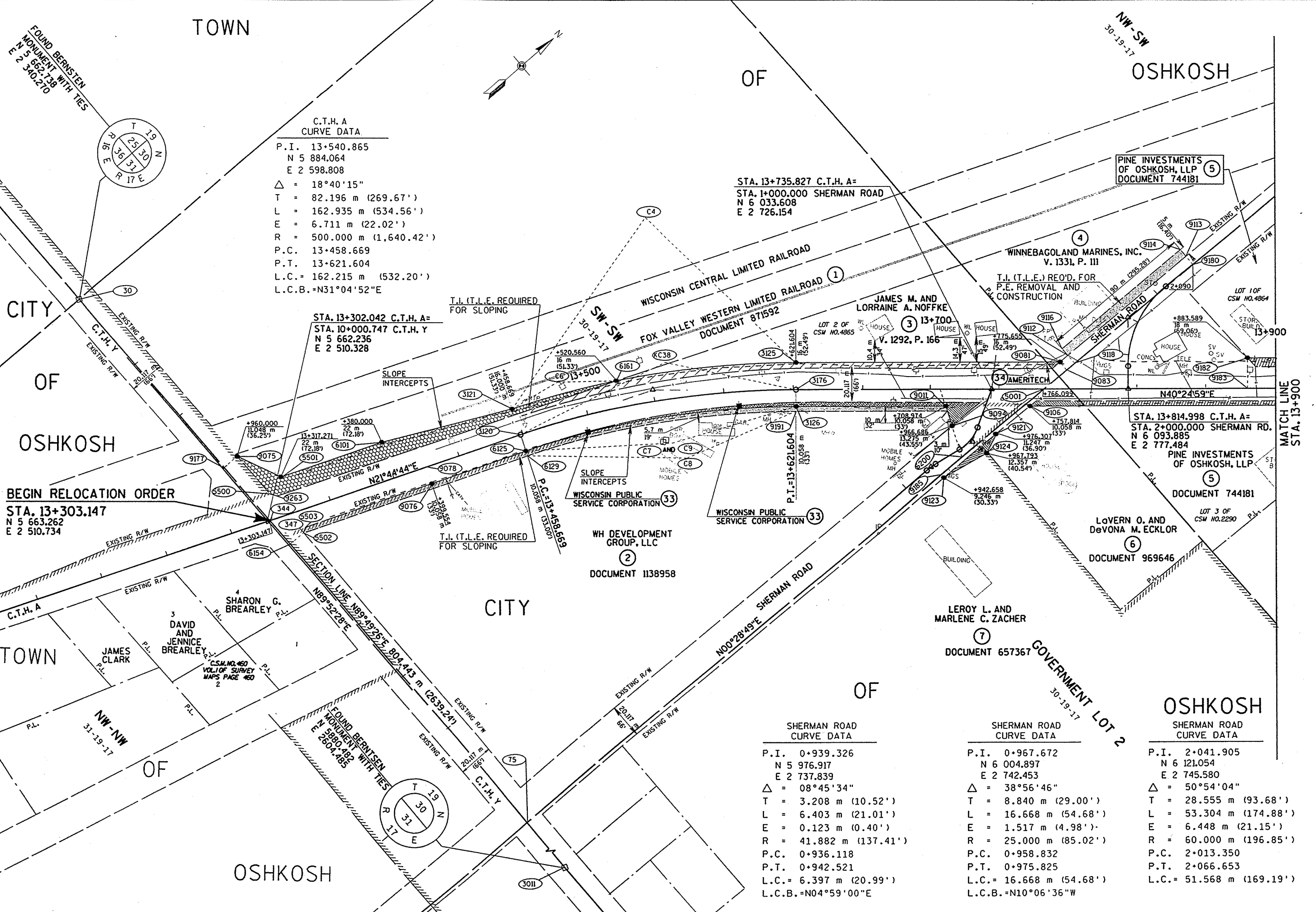
PARCEL NUMBER	SHEET NUMBER	OWNER	INTEREST REQUIRED	TOTAL AREA	R/W AREA REQUIRED			TOTAL AREA REMAINING	HIGHWAY EASEMENT AREA	T.I. AREA
					NEW	EXISTING	TOTAL			
1	4.3	FOX VALLEY AND WESTERN LTD.	T.I. AND HIGHWAY EASEMENT	-----	-----	-----	-----	0.154 ha ( 0.38 AC. )	-----	
2	4.3	WH DEVELOPMENT GROUP, LLC	FEE AND T.I.	4.112 ha ( 10.16 AC. )	0.040 ha ( 0.10 AC. )	-----	0.040 ha ( 0.10 AC. )	4.072 ha ( 10.06 AC. )	-----	0.113 ha ( 0.28 AC. )
3	4.3	JAMES M. AND LORRAINE A. NOFFKE	FEE	0.761 ha ( 1.88 AC. )	0.116 ha ( 0.29 AC. )	-----	0.113 ha ( 0.28 AC. )	0.113 ha ( 0.28 AC. )	-----	-----
4	4.3	WINNEBAGOLAND MARINES, INC.	FEE	1.012 ha ( 2.50 AC. )	0.002 ha ( 0.01 AC. )	0.004 ha ( 0.01 AC. )	0.006 ha ( 0.02 AC. )	1.006 ha ( 2.48 AC. )	-----	0.045 ha ( 0.11 AC. )
5	4.3,4.5	PINE INVESTMENTS OF OSHKOSH, LLP	FEE	1.627 ha ( 4.02 AC. )	0.099 ha ( 0.24 AC. )	0.133 ha ( 0.33 AC. )	0.232 ha ( 0.57 AC. )	1.395 ha ( 3.45 AC. )	-----	-----
6	4.3	LOVERN O. AND DEVONA M. ECKLOR	FEE	0.405 ha ( 1.92 AC. )	0.011 ha ( 0.03 AC. )	0.009 ha ( 0.02 AC. )	0.020 ha ( 0.05 AC. )	0.385 ha ( 1.87 AC. )	-----	-----
7	4.3	LEROY L. AND MARLENE C. ZACHER	FEE	8.871 ha ( 21.92 AC. )	0.008 ha ( 0.02 AC. )	0.007 ha ( 0.02 AC. )	0.015 ha ( 0.04 AC. )	8.856 ha ( 21.88 AC. )	-----	-----
8	4.5	WILLIAM M. MONTEITH	FEE	1.526 ha ( 3.77 AC. )	0.057 ha ( 0.14 AC. )	-----	0.057 ha ( 0.14 AC. )	1.469 ha ( 3.63 AC. )	-----	-----
9	4.5	T. STEVEN AND SHARON M. KAROW	FEE	5.160 AC. ( 12.75 AC. )	0.065 ha ( 0.16 AC. )	-----	0.065 ha ( 0.16 AC. )	5.095 ha ( 12.59 AC. )	-----	-----
10	4.5	BENJAMIN T. GANTHER AND GANTHER CONSTRUCTION, INC.	FEE	3.78 ha ( 9.34 AC. )	0.124 ha ( 0.31 AC. )	-----	0.124 ha ( 0.31 AC. )	3.656 ha ( 9.03 AC. )	-----	-----
11	4.5	ERNEST D. AND JEANETTE LEHL	FEE	5.743 ha ( 14.18 AC. )	0.101 ha ( 0.25 AC. )	-----	0.101 ha ( 0.25 AC. )	5.642 ha ( 13.93 AC. )	-----	-----
12	4.5	DONNA M. HENSCHER AND JUDY L. BABEL	FEE AND T.I.	6.354 ha ( 15.70 AC. )	0.205 ha ( 0.51 AC. )	0.334 ha ( 0.83 AC. )	0.539 ha ( 1.34 AC. )	5.815 ha ( 14.36 AC. )	-----	0.002 ha ( 0.01 AC. )
13	4.5,4.7	WILLIAM A. AND WENDY L. WORM	FEE AND T.I.	0.728 ha ( 1.80 AC. )	0.059 ha ( 0.15 AC. )	0.061 ha ( 0.15 AC. )	0.120 ha ( 0.30 AC. )	0.608 ha ( 1.50 AC. )	-----	0.005 ha ( 0.01 AC. )
14	4.5	MONTEITH PROPERTIES, LLC	FEE	10.020 ha ( 24.76 AC. )	0.188 ha ( 0.46 AC. )	-----	0.188 ha ( 0.46 AC. )	9.832 ha ( 24.30 AC. )	-----	-----
15	4.7	JUDY L. ONKEN, ET.AL.	FEE AND T.I.	0.405 ha ( 1.00 AC. )	0.012 ha ( 0.03 AC. )	0.034 ha ( 0.08 AC. )	0.044 ha ( 0.10 AC. )	0.361 ha ( 0.90 AC. )	-----	0.017 ha ( 0.04 AC. )
16	4.7	FREDERICK A. MONTEITH	FEE	3.998 ha ( 9.88 AC. )	0.171 ha ( 0.42 AC. )	-----	0.171 ha ( 0.42 AC. )	3.827 ha ( 9.46 AC. )	-----	-----
17	4.7	KATHLEEN M. OMORI	FEE AND T.I.	4.152 ha ( 10.26 AC. )	0.159 ha ( 0.39 AC. )	-----	0.159 ha ( 0.39 AC. )	3.993 ha ( 9.87 AC. )	-----	0.003 ha ( 0.01 AC. )
18	4.7	DAVID O. AND MARYANN ZUNKER	FEE	4.359 ha ( 10.77 AC. )	0.101 ha ( 0.25 AC. )	0.153 ha ( 0.38 AC. )	0.254 ha ( 0.63 AC. )	4.105 ha ( 10.14 AC. )	-----	-----
19	4.7	RANDALL D. AND SUSAN E. VANMAANEN	FEE	2.161 ha ( 5.34 AC. )	0.063 ha ( 0.16 AC. )	0.092 ha ( 0.23 AC. )	0.155 ha ( 0.39 AC. )	2.006 ha ( 4.95 AC. )	-----	-----
20	4.7	CHARLES S. AND MARY L. ZEMLO	T.I.	-----	-----	-----	-----	-----	-----	0.018 ha ( 0.04 AC. )
21	4.7	RICHARD AND LOIS BREAKER-VENDOR BRUCE S. BENNETT-PURCHASER	T.I.	-----	-----	-----	-----	-----	-----	0.010 ha ( 0.02 AC. )
22	4.7	OPAL J. MAYNE	T.I.	-----	-----	-----	-----	-----	-----	0.010 ha ( 0.02 AC. )
23	4.7	LESLIE L. AND LORRAINE E. CLARK	T.I.	-----	-----	-----	-----	-----	-----	0.010 ha ( 0.02 AC. )
24	4.7	NICHOLAS J. KLINGBEIL	T.I.	-----	-----	-----	-----	-----	-----	0.010 ha ( 0.02 AC. )
25	4.7	ROBERT C., SR. AND JANE L. LINCOLN	FEE AND T.I.	0.745 ha ( 1.84 AC. )	0.032 ha ( 0.08 AC. )	-----	0.032 ha ( 0.08 AC. )	0.713 ha ( 1.76 AC. )	-----	0.0298 ha ( 0.07 AC. )
26	4.7	DANIEL E. HOLST	FEE	2.489 ha ( 6.15 AC. )	0.090 ha ( 0.22 AC. )	-----	0.090 ha ( 0.22 AC. )	2.399 ha ( 5.93 AC. )	-----	-----
27	4.7	DAVID C. WISSINK	FEE	2.586 ha ( 6.39 AC. )	0.067 ha ( 0.17 AC. )	-----	0.067 ha ( 0.17 AC. )	2.519 ha ( 6.22 AC. )	-----	-----
28	4.7,4.9	SHIRLEY L. BECK	FEE	17.377 ha ( 42.94 AC. )	0.380 ha ( 0.94 AC. )	0.428 ha ( 1.06 AC. )	0.808 ha ( 2.00 AC. )	16.569 ha ( 40.94 AC. )	-----	-----
29	4.9	GREGORY J. AND TERRI LYNN HIGGINS	FEE AND T.I.	1.133 ha ( 2.80 AC. )	0.017 ha ( 0.04 AC. )	-----	0.017 ha ( 0.04 AC. )	0.116 ha ( 0.27 AC. )	-----	0.001 ha ( 0.01 AC. )
30	4.9	TISDALE P. JR. AND COLLEEN J. FUHRMAN	FEE AND T.I.	0.348 ha ( 0.86 AC. )	0.017 ha ( 0.04 AC. )	0.068 ha ( 0.17 AC. )	0.085 ha ( 0.21 AC. )	0.263 ha ( 0.65 AC. )	-----	0.011 ha ( 0.03 AC. )
31	4.9	INDIAN POINT PROPERTIES, LLC	FEE	0.809 ha ( 2.00 AC. )	0.056 ha ( 0.14 AC. )	0.115 ha ( 0.28 AC. )	0.171 ha ( 0.42 AC. )	0.638 ha ( 1.58 AC. )	-----	-----
32	4.9	ROGER F. RUEDINGER AND CLAUDIA OTTO	FEE	0.670 ha ( 1.66 AC. )	0.034 ha ( 0.08 AC. )	-----	0.034 ha ( 0.08 AC. )	0.636 ha ( 1.58 AC. )	-----	-----
33	4.3,4.7	WISCONSIN PUBLIC SERVICE CORPORATION	RELEASE OF RIGHTS	-----	-----	-----	-----	-----	-----	-----
34	4.3	AMERITECH	RELEASE OF RIGHTS	-----	-----	-----	-----	-----	-----	-----

ORIGINATOR: JPZ  
 PROJECT NO: 44-0234  
 LEVELS ON: 1, 2, 3, 4, 5, 6, 7, 8, 9, 10, 11, 12, 13, 14, 15, 16, 17, 18, 19, 20, 21, 22, 23, 24, 25, 26, 27, 28, 29, 30, 31, 32, 33, 34, 35, 36, 37, 38, 39, 40, 41, 42, 43, 44, 45, 46, 47, 48, 49, 50, 51, 52, 53, 54, 55, 56, 57, 58, 59, 60, 61, 62.  
 FILE NAME:  
 SCALE:  
 DATE: 12/24/96  
 PLOT NAME:  
 PEN TABLE = #PLOT#LASER#LEVEL#BI  
 DATE OF PLOT = 4/5/02  
 PLOT NA  
 DGN NA

REVISION DATE	DATE	04-02-2002	HIGHWAY: C.T.H. A	FEDERAL PROJECT NO:	
			COUNTY: WINNEBAGO	STATE R/W PROJECT NO: 4627-01-00	SHEET NO: 4.2

PEN TABLE = #PHOTOLASERLEVEL.TDI  
DATE OF PLOT = 4/5/02  
PLOT NA  
DCN NA

ORIGINATOR:  
LEVELS ON = 1, 2, 3, 4, 5, 6, 7, 8, 9, 10, 11, 12, 13, 14, 15, 16, 17, 18, 19, 20, 21, 22, 23, 24, 25, 26, 27, 28, 29, 30, 31, 32, 33, 34, 35, 36, 37, 38, 39, 40, 41, 42, 43, 44, 45, 46, 47, 48, 49, 50, 51, 52, 53, 54, 55, 56, 57, 58, 59, 60, 61, 62, 63  
RWPT.DGN ON = 1-63  
RWPT.DGN ON = 1-63  
RWPT.DGN ON = 1-63



C.T.H. A CURVE DATA

P.I.	13+540.865
N	5 884.064
E	2 598.808
Δ	18°40'15"
T	82.196 m (269.67')
L	162.935 m (534.56')
E	6.711 m (22.02')
R	500.000 m (1,640.42')
P.C.	13+458.669
P.T.	13+621.604
L.C.	162.215 m (532.20')
L.C.B.	N31°04'52"E

STA. 13+302.042 C.T.H. A =  
STA. 10+000.747 C.T.H. Y  
N 5 662.236  
E 2 510.328

STA. 13+735.827 C.T.H. A =  
STA. 1+000.000 SHERMAN ROAD  
N 6 033.608  
E 2 726.154

BEGIN RELOCATION ORDER  
STA. 13+303.147  
N 5 663.262  
E 2 510.734

FOUND BERNSTEIN MONUMENT WITH TIES  
E 2 2604.485  
E 2 2604.485

SHERMAN ROAD CURVE DATA

P.I.	0+939.326
N	5 976.917
E	2 737.839
Δ	08°45'34"
T	3.208 m (10.52')
L	6.403 m (21.01')
E	0.123 m (0.40')
R	41.882 m (137.41')
P.C.	0+936.118
P.T.	0+942.521
L.C.	6.397 m (20.99')
L.C.B.	N04°59'00"E

SHERMAN ROAD CURVE DATA

P.I.	0+967.672
N	6 004.897
E	2 742.453
Δ	38°56'46"
T	8.840 m (29.00')
L	16.668 m (54.68')
E	1.517 m (4.98')
R	25.000 m (85.02')
P.C.	0+958.832
P.T.	0+975.825
L.C.	16.668 m (54.68')
L.C.B.	N10°06'36"W

SHERMAN ROAD CURVE DATA

P.I.	2+041.905
N	6 121.054
E	2 745.580
Δ	50°54'04"
T	28.555 m (93.68')
L	53.304 m (174.88')
E	6.448 m (21.15')
R	60.000 m (196.85')
P.C.	2+013.350
P.T.	2+066.653
L.C.	51.568 m (169.19')

REVISION DATE	DATE 04-02-2002	SCALE. METERS 0 50 100	HWY: C.T.H. A	FEDERAL PROJECT NO:	
	GRID FACTOR		COUNTY: WINNEBAGO	STATE R/W PROJECT NO: 4627-01-00	SHEET NO: 4.3

FILE NAME: WSDOT: MSH75

# BEARINGS, DISTANCES AND COORDINATES FOR PLAT SHEET 4.3

## PARCEL 1

COORDINATES		
POINT NUMBER	N	E
30	5662.738	2340.270
9177	5663.138	2470.322
9075	5683.196	2470.300
5500	5673.285	2499.118
9263	5675.508	2502.479
PC C6	5871.357	2850.764
PT C6	5813.645	2553.494
6101	5742.797	2518.775
5501	5684.531	2495.535

COURSE TABLE		
COURSE	BEARING	DISTANCE
30-9177	N 89°49'26" E	130.053 m ( 426.68' )
9177-9075	N 00°07'32" W	10.059 m ( 33.00' )
9075-5500	N 89°49'26" E	28.818 m ( 94.55' )
5500-9263	N 56°30'59" E	4.029 m ( 13.22' )
9263-PC C6	N 21°47'16" E	210.916 m ( 691.98' )
PC C6-PT C6	S 25°17'30" W	63.830 m ( 209.42' )
PT C6-6101	S 26°06'25" W	78.897 m ( 258.85' )
6101-5501	S 21°44'44" W	62.729 m ( 205.80' )
5501-9075	S 65°48'41" W	27.664 m ( 90.76' )

## PARCEL 2

COORDINATES		
POINT NUMBER	N	E
30	5662.738	2340.270
344	5663.262	2510.737
9078	5752.808	2546.454
PC KC38	5807.717	2568.356
PT KC38	5946.644	2652.099
5001	6056.656	2745.781
6200	5994.370	2745.259
9011	6006.643	2716.402
PC C9	5940.123	2659.756
PT C9	5803.991	2577.698
9076	5749.082	2555.797

COURSE TABLE		
COURSE	BEARING	DISTANCE
30-344	N 89°49'26" E	170.468 m ( 559.28' )
344-9078	N 21°44'44" E	96.407 m ( 316.30' )
9078-PC KC38	N 21°44'44" E	59.116 m ( 193.95' )
PC KC38-PT KC38	N 31°04'52" E	162.215 m ( 532.20' )
PT KC38-5001	N 40°24'59" E	144.495 m ( 474.06' )
5001-6200	S 00°28'49" W	62.288 m ( 204.36' )
6200-9011	N 66°57'36" W	31.358 m ( 102.88' )
9011-PC C9	S 40°24'59" W	87.371 m ( 286.65' )
PC C9-PT C9	S 31°04'52" W	158.950 m ( 521.49' )
PT C9-9076	S 21°44'44" W	59.115 m ( 193.95' )
9076-9078	N 68°15'16" W	10.058 m ( 33.00' )

## PARCELS 3 AND 4

COORDINATES		
POINT NUMBER	N	E
30	5662.738	2340.270
344	5663.262	2510.737
PC KC38	5807.717	2568.356
PT KC38	5946.644	2652.099
5001	6056.656	2745.781
9083	6074.253	2745.928
9081	6074.305	2739.795
PC C4	5940.123	2659.756
PT C4	5813.645	2553.494

COURSE TABLE		
COURSE	BEARING	DISTANCE
30-344	N 89°49'26" E	170.468 m ( 559.28' )
344-PC KC38	N 21°44'44" E	155.522 m ( 510.24' )
PC KC38-PT KC38	N 31°04'52" E	162.215 m ( 532.20' )
PT KC38-5001	N 40°24'59" E	144.495 m ( 474.06' )
5001-9083	N 00°28'49" E	17.598 m ( 57.74' )
9083-9081	N 89°31'11" W	6.134 m ( 20.12' )
9081-PC C4	S 40°24'59" W	154.051 m ( 505.42' )
PC C4-PT C4	S 31°04'52" W	167.406 m ( 549.23' )
PT C4-PC KC38	S 68°15'16" E	16.000 m ( 52.49' )

## PARCEL 2 T.L.E.

COORDINATES		
POINT NUMBER	N	E
30	5662.738	2340.270
6154	5663.318	2528.798
5502	5673.376	2528.767
5503	5676.337	2526.906
9076	5749.082	2555.797
PC C7	5803.992	2577.699
PT C7	5940.123	2659.767
9011	6006.643	2716.402
9187	6005.436	2719.239
PC C8	5938.216	2661.996
PT C8	5802.901	2580.431

COURSE TABLE		
COURSE	BEARING	DISTANCE
30-6154	N 89°49'26" E	188.529 m ( 618.53' )
6154-5502	N 00°10'34" W	10.058 m ( 33.00' )
5502-5503	N 32°08'35" W	3.497 m ( 11.47' )
5503-9076	N 21°39'40" E	78.271 m ( 256.79' )
9076-PC C7	N 21°44'44" E	59.117 m ( 193.95' )
PC C7-PT C7	N 31°04'52" E	158.950 m ( 521.49' )
PT C7-9011	N 40°24'59" E	87.371 m ( 286.65' )
9011-9187	S 66°57'36" E	3.083 m ( 10.11' )
9187-PC C8	S 40°24'59" W	88.291 m ( 289.67' )
PC C8-PT C8	S 31°04'52" W	157.997 m ( 518.36' )
PT C8-5502	S 21°44'44" W	139.448 m ( 457.51' )

## PARCELS 5,6,7,8,9,10 AND 14

COORDINATES		
POINT NUMBER	N	E
70	6475.366	3150.647
3270	6475.248	3134.544
PC C16	6474.860	3081.507
PT C16	6405.146	3016.272
9314	6383.450	3000.424
9182	6157.777	2808.249
9183	6146.107	2821.954
5001	6056.656	2745.781
9185	5978.599	2745.126
9123	5978.578	2747.484
9124	6006.770	2752.963
9121	6018.118	2747.837
9106	6043.827	2748.067
3133	6167.308	2853.218
3134	6179.330	2869.947
3136	6209.785	2895.881
3137	6240.887	2921.053
PC C17	6383.102	3042.158
PT C17	6450.196	3104.914

COURSE TABLE		
COURSE	BEARING	DISTANCE
70-3270	S 89°34'50" W	16.103 m ( 52.83' )
3270-PC C16	S 89°34'50" W	53.038 m ( 174.01' )
PC C16-PT C16	S 43°05'56" W	95.476 m ( 313.24' )
PT C16-9314	S 36°08'51" W	26.868 m ( 88.15' )
9314-9182	S 40°24'59" W	296.411 m ( 972.48' )
9182-9183	S 49°35'01" E	18.000 m ( 59.06' )
9183-5001	S 40°24'59" W	117.489 m ( 385.46' )
5001-9185	S 00°28'49" W	78.060 m ( 256.10' )
9185-9123	S 89°29'17" E	2.358 m ( 7.73' )
9123-9124	N 10°59'51" E	28.720 m ( 94.23' )
9124-9121	N 24°18'24" W	12.452 m ( 40.85' )
9121-9106	N 00°30'43" E	25.710 m ( 84.35' )
9106-3133	N 40°24'59" E	162.186 m ( 532.11' )
3133-3134	N 54°17'46" E	20.602 m ( 67.59' )
3134-3136	N 40°24'59" E	40.000 m ( 131.23' )
3136-3137	N 38°59'04" E	40.013 m ( 131.28' )
3137-PC C17	N 40°24'59" E	186.793 m ( 612.84' )
PC C17-PT C17	N 43°05'12" E	91.869 m ( 301.41' )
PT C17-3270	N 49°47'08" E	38.801 m ( 127.30' )

## PARCEL 4 T.L.E.

COORDINATES		
POINT NUMBER	N	E
30	5662.738	2340.270
75	5663.974	2742.489
9118	6080.258	2745.978
9112	6080.305	2739.840
9116	6080.342	2734.840
9114	6170.340	2735.522
9113	6170.302	2740.522

COURSE TABLE		
COURSE	BEARING	DISTANCE
30-75	N 89°49'26" E	402.221 m ( 1319.62' )
75-9118	N 00°28'49" E	416.299 m ( 1365.81' )
9118-9112	N 89°33'56" W	6.139 m ( 20.14' )
9112-9116	N 89°33'56" W	5.000 m ( 16.40' )
9116-9114	N 00°26'04" E	90.000 m ( 295.27' )
9114-9113	S 89°33'56" E	5.000 m ( 16.40' )
9113-9112	S 00°26'04" W	90.000 m ( 295.27' )

## PARCELS 1-10 AND 14

CURVE TABLE										
CURVE	L.C.B.	L.C.	L.	R.	P.C.		RADIUS		P.T.	
					N	E	N	E	N	E
C4	S 31°04'52" W	167.406 m ( 549.23' )	168.419 m ( 552.55' )	516.000 m ( 1692.91' )	5957.017	2639.917	5622.475	3032.775	5813.645	2553.494
C6	S 25°17'30" W	63.830 m ( 209.42' )	63.871 m ( 209.55' )	516.000 m ( 1692.91' )	5871.357	2580.764	5622.475	3032.775	5813.645	2553.464
C7	S 31°04'52" W	158.950 m ( 521.49' )	159.655 m ( 523.80' )	489.942 m ( 1607.42' )	5803.992	2577.699	5622.475	3032.775	5940.123	2659.757
C8	S 31°04'52" W	157.997 m ( 518.36' )	158.698 m ( 520.66' )	487.000 m ( 1597.77' )	5938.216	2661.996	5622.475	3032.775	5802.901	2580.431
C9	N 31°04'52" E	158.950 m ( 521.49' )	159.655 m ( 523.80' )	489.942 m ( 1607.42' )	5940.123	2659.756	5622.475	3032.775	5803.992	2577.699
KC38	N 31°04'52" E	162.215 m ( 532.20' )	162.935 m ( 534.56' )	500.000 m ( 1640.42' )	5807.717	2568.356	5622.475	3032.775	5946.644	2652.099
C16	S 43°05'56" W	95.476 m ( 313.24' )	95.511 m ( 313.36' )	1020.000 m ( 3346.45' )	6474.860	3081.507	5743.841	3792.852	6405.146	3016.272
C17	N 43°05'12" E	91.869 m ( 301.41' )	91.902 m ( 301.52' )	986.000 m ( 3234.90' )	6383.102	3042.158	5743.841	3792.852	6450.196	3104.914

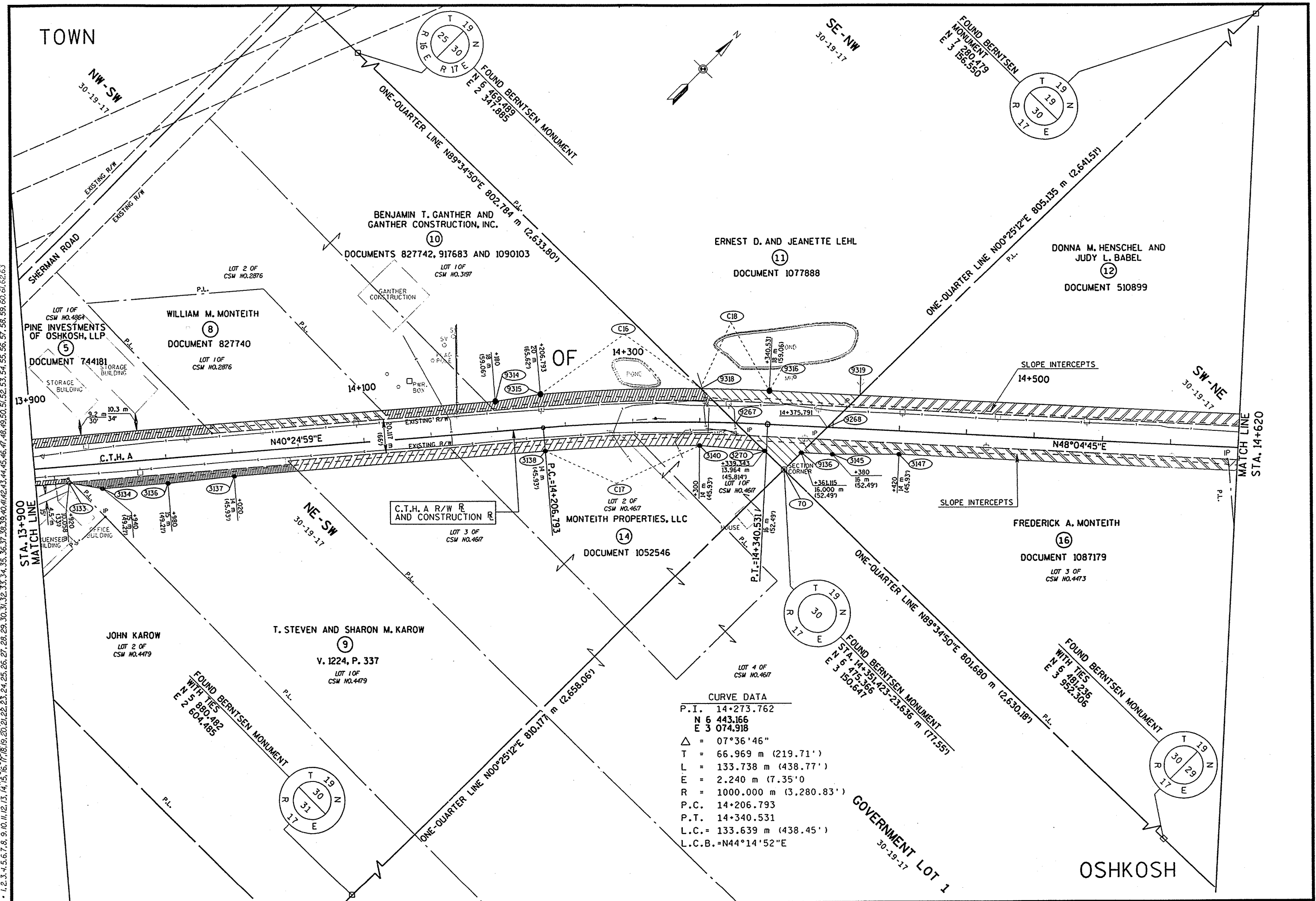
PLAN TABLE = F:\T\ELAS\K\B\V\h1.TDI  
 DATE OF PLOT = 4/6/02  
 PLOT NA  
 DGN NA

ORIGINATOR: RWPT,DCN ON = 1-63  
 LEVELS ON = 1, 2, 3, 4, 5, 6, 7, 8, 9, 10, 11, 12, 13, 14, 15, 16, 17, 18, 19, 20, 21, 22, 23, 24, 25, 26, 27, 28, 29, 30, 31, 32, 33, 34, 35, 36, 37, 38, 39, 40, 41, 42, 43, 44, 45, 46, 47, 48, 49, 50, 51, 52, 53, 54, 55, 56, 57, 58, 59, 60, 61, 62, 63  
 RWPT,DCN ON = 1-63  
 FILE NAME:

REVISION DATE	DATE: 04-02-2002	SCALE, METERS	HWY: C.T.H. A	FEDERAL PROJECT NO:
	GRID FACTOR		COUNTY: WINNEBAGO	STATE R/W PROJECT NO: 4627-01-00
				SHEET NO: 4.4

PEN TABLE = #Plot#LASER#LEVEL.tdi  
 DATE OF PLOT = 4/5/02  
 PLOT NA  
 DGN NA

ORIGINATOR: RVTOPD, 1588, 10, 11, 12, 13, 14, 15, 16, 17, 18, 19, 20, 21, 22, 23, 24, 25, 26, 27, 28, 29, 30, 31, 32, 33, 34, 35, 36, 37, 38, 39, 40, 41, 42, 43, 44, 45, 46, 47, 48, 49, 50, 51, 52, 53, 54, 55, 56, 57, 58, 59, 60, 61, 62, 63  
 LEVELS ON = 1, 2, 3, 4, 5, 6, 7, 8, 9, 10, 11, 12, 13, 14, 15, 16, 17, 18, 19, 20, 21, 22, 23, 24, 25, 26, 27, 28, 29, 30, 31, 32, 33, 34, 35, 36, 37, 38, 39, 40, 41, 42, 43, 44, 45, 46, 47, 48, 49, 50, 51, 52, 53, 54, 55, 56, 57, 58, 59, 60, 61, 62, 63



REVISION DATE	DATE 04-02-2002	SCALE, METERS 0 50 100	HWY: HWY: C.T.H. A	FEDERAL PROJECT NO:
GRID FACTOR			COUNTY: WINNEBAGO	STATE R/W PROJECT NO: 4627-01-00
FILE NAME:				SHEET NO: 4.5 M

WISDOT: MSRT 75



# BEARINGS, DISTANCES AND COORDINATES FOR PLAT SHEET 4.5

## PARCELS 5,6,7,8,9,10 AND 14

## PARCELS 12,13,15-19,25-PART OF 28 AND 29

COORDINATES		
POINT NUMBER	N	E
70	6475.366	3150.647
3270	6475.248	3134.544
PC C16	6474.860	3081.507
PT C16	6405.146	3016.272
9314	6383.450	3000.424
9182	6157.777	2808.249
9183	6146.107	2821.954
5001	6056.656	2745.781
9185	5978.599	2745.126
9123	5978.578	2747.484
9124	6006.770	2752.963
9121	6018.118	2747.837
9106	6043.827	2748.067
3133	6167.308	2853.218
3134	6179.330	2869.947
3136	6209.785	2895.881
3137	6240.887	2921.053
PC C17	6383.102	3042.158
PT C17	6450.196	3104.914

COURSE TABLE			
COURSE	BEARING	DISTANCE	
70-3270	S 89°34'50" W	16.103 m	( 52.83' )
3270-PC C16	S 89°34'50" W	53.038 m	( 174.01' )
PC C16-PT C16	S 43°05'56" W	95.476 m	( 313.24' )
PT 16-9314	S 36°08'51" W	26.868 m	( 88.15' )
9314-9182	S 40°24'59" W	296.411 m	( 972.48' )
9182-9183	S 49°35'01" E	18.000 m	( 59.06' )
9183-5001	S 40°24'59" W	117.489 m	( 385.46' )
5001-9185	S 00°28'49" W	78.060 m	( 256.10' )
9185-9123	S 89°29'17" E	2.358 m	( 7.73' )
9123-9124	N 10°59'51" E	28.720 m	( 94.23' )
9124-9121	N 24°18'24" W	12.452 m	( 40.85' )
9121-9106	N 00°30'43" E	25.710 m	( 84.35' )
9106-3133	N 40°24'59" E	162.186 m	( 532.11' )
3133-3134	N 54°17'46" E	20.602 m	( 67.59' )
3134-3136	N 40°24'59" E	40.000 m	( 131.23' )
3136-3137	N 38°59'04" E	40.013 m	( 131.28' )
3137-PC C17	N 40°24'59" E	186.793 m	( 612.84' )
PC C17-PT C17	N 43°05'12" E	91.869 m	( 301.41' )
PT C17-3270	N 49°47'08" E	38.801 m	( 127.30' )

COORDINATES		
POINT NUMBER	N	E
70	6475.366	3150.647
9136	6489.755	3150.752
9319	6538.458	3151.110
9317	6716.228	3349.092
9273	6738.488	3382.863
PC C20	6768.981	3416.823
PT C20	6785.257	3435.401
PC C21	6807.012	3456.937
PT C21	6850.327	3514.906
PC C22	7005.325	3738.512
PT C22	7038.563	3783.006
PC C23	7051.780	3797.463
PT C23	7091.300	3840.780
9158	7104.560	3855.369
PC C30	7142.574	3892.685
PT C30	7205.228	3951.577
9297	7211.829	3958.894
9298	7212.401	3959.417
PC C34	7168.803	3958.993
PT C34	7121.559	3914.094
PC C43	7079.311	3872.621
PT C43	7041.063	3832.422
3215	6997.805	3830.814
PC C44	7001.218	3778.713
PT C44	6982.538	3753.005
9151	6844.732	3553.863
PC C52	6824.849	3532.566
PT C52	6748.147	3435.530
3147	6530.585	3193.231
3145	6502.372	3164.805

COURSE TABLE		
COURSE	BEARING	DISTANCE
70-9136	N 00°25'12" E	14.389 m ( 47.21' )
9136-9319	N 00°25'12" E	48.705 m ( 159.79' )
9319-9317	N 48°04'45" E	266.081 m ( 872.97' )
9317-9273	N 56°36'36" E	40.447 m ( 132.70' )
9273-PC C20	N 48°04'45" E	45.641 m ( 149.74' )
PC C20-PT C20	N 48°46'37" E	24.700 m ( 81.04' )
PT C20-PC C21	N 44°42'38" E	30.611 m ( 100.43' )
PC C21-PT C21	N 53°13'57" E	72.365 m ( 237.42' )
PT C21-PC C22	N 55°16'17" E	272.074 m ( 892.63' )
PC C22-PT C22	N 53°14'20" E	55.538 m ( 182.21' )
PT C22-PC C23	N 47°33'51" E	19.588 m ( 64.26' )
PC C23-PT C23	N 47°37'32" E	58.636 m ( 192.38' )
PT C23-9158	N 47°43'44" E	19.715 m ( 64.68' )
9158-PC C30	N 44°28'10" E	53.269 m ( 174.77' )
PC C30-PT C30	N 43°13'38" E	85.987 m ( 282.11' )
PT C30-9297	N 47°56'47" E	9.854 m ( 32.33' )
9297-9298	N 42°25'58" E	0.776 m ( 2.55' )
9298-PC C34	S 00°33'26" W	43.600 m ( 143.04' )
PC C34-PT C34	S 43°32'31" W	65.177 m ( 213.83' )
PT C34-PC C43	S 44°28'10" W	59.202 m ( 194.23' )
PC C43-PT C43	S 46°25'30" W	55.487 m ( 182.04' )
PT C43-3215	S 02°07'44" W	43.288 m ( 142.02' )
3215-PC C44	N 86°15'09" W	52.213 m ( 171.30' )
PC C44-PT C44	S 53°59'50" W	31.778 m ( 104.26' )
PT C44-9151	S 55°19'01" W	242.173 m ( 794.53' )
9151-PC C52	S 46°58'00" W	29.135 m ( 95.59' )
PC C52-PT C52	S 51°40'31" W	123.691 m ( 405.81' )
PT C52-3147	S 48°04'45" W	325.641 m ( 1068.37' )
3147-3145	S 45°13'00" W	40.050 m ( 131.40' )
3145-9136	S 48°04'45" W	18.885 m ( 61.96' )


### PARCEL 11

COORDINATES		
POINT NUMBER	N	E
70	6475.366	3150.647
PC C18	6474.860	3081.507
PT C18	6502.435	3110.990
9319	6538.458	3151.110

COURSE TABLE			
COURSE	BEARING	DISTANCE	
70-PC C18	S 89°34'50" W	69.142 m	( 226.84' )
PC C18-PT C18	N 46°54'55" E	40.368 m	( 132.44' )
PT C18-9319	N 48°04'45" E	53.919 m	( 176.90' )
9319-70	S 00°25'12" W	63.094 m	( 207.00' )

## PARCELS 5-19, 25-PART OF 28 AND 29

CURVE TABLE										
CURVE	L.C.B.	L.C.	L.	R.	P.C.		RADIUS		P.T.	
					N	E	N	E	N	E
C16	S 43°05'56" W	95.476 m ( 313.24' )	95.511 m ( 313.36' )	1020.000 m ( 3346.45' )	6474.860	3081.507	5743.841	3792.852	6405.146	3016.272
C17	N 43°05'12" E	91.869 m ( 301.41' )	91.902 m ( 301.52' )	986.000 m ( 3234.90' )	6383.102	3042.158	5743.841	3792.852	6450.196	3104.914
C18	N 46°54'55" E	40.368 m ( 132.44' )	40.371 m ( 132.45' )	1020.000 m ( 3346.45' )	6474.860	3081.507	5743.841	3792.852	6502.435	3110.990
C20	N 48°46'37" E	24.700 m ( 81.04' )	24.700 m ( 81.04' )	1014.000 m ( 3326.77' )	6768.981	3416.823	6014.496	4094.280	6785.257	3435.401
C21	N 53°13'57" E	72.365 m ( 237.42' )	72.380 m ( 237.47' )	1017.000 m ( 3336.61' )	6807.012	3456.937	6014.496	4094.280	6850.327	3514.906
C22	N 53°14'20" E	55.538 m ( 182.21' )	55.550 m ( 182.25' )	783.000 m ( 2568.89' )	7005.325	3738.512	7648.841	3292.445	7038.563	3783.006
C23	N 47°37'32" E	58.636 m ( 192.37' )	58.650 m ( 192.42' )	782.000 m ( 2565.61' )	7051.780	3797.463	7648.841	3292.445	7091.300	3840.780
C30	N 43°13'38" E	85.987 m ( 282.11' )	85.994 m ( 282.13' )	1983.000 m ( 6205.89' )	7142.574	3892.685	8531.724	2477.569	7205.228	3951.577
C34	S 43°32'31" W	65.177 m ( 213.83' )	65.180 m ( 213.84' )	2013.000 m ( 6604.32' )	7168.803	3958.993	8531.724	2477.569	7121.559	3914.094
C43	S 46°25'30" W	55.487 m ( 182.04' )	55.498 m ( 182.08' )	813.000 m ( 2667.32' )	7079.311	3872.621	7648.841	3292.445	7041.063	3832.422
C44	S 53°59'50" W	31.778 m ( 104.26' )	31.781 m ( 104.27' )	689.886 m ( 2263.40' )	7001.218	3778.713	7549.839	3360.434	6982.538	3753.005
C52	S 51°40'31" W	123.691 m ( 405.81' )	123.772 m ( 406.08' )	986.000 m ( 3234.90' )	6824.849	3532.566	6014.496	4094.280	6748.147	3435.530

REVISION DATE	DATE	SCALE, METERS	HWY: C.T.H. A	FEDERAL PROJECT NO:	
	04-02-2002	0	COUNTY: WINNEBAGO	STATE R/W PROJECT NO: 4627-01-00	SHEET NO: 4.6
	GRID FACTOR				M

PEN TABLE = #Plot+LASER+level.tbl  
 DATE OF PLOT = 4/6/02  
 PLOT NA  
 DGN NA

ORIGINATOR: RWPT.DGN ON: 1-53  
 LEVELS ON: 1, 2, 3, 4, 5, 6, 7, 8, 9, 10, 11, 12, 13, 14, 15, 16, 17, 18, 19, 20, 21, 22, 23, 24, 25, 26, 27, 28, 29, 30, 31, 32, 33, 34, 35, 36, 37, 38, 39, 40, 41, 42, 43, 44, 45, 46, 47, 48, 49, 50, 51, 52, 53, 54, 55, 56, 57, 58, 59, 60, 61, 62, 63

PEN TABLE = ±PIOT±LASER±LEVEL.tbi  
 DATE OF PLOT = 4/5/02  
 PLOT NA  
 DGN NA

TOWN

DONNA M. HENSCHEL AND JUDY L. BABEL  
 DOCUMENT 510899

WILLIAM A. AND WENDY L. WORM  
 DOCUMENT 828954

JUDY L. ONKEN, JANICE L. KLEINSCHMIDT AND PAMELA BERGER  
 DOCUMENT 814309, 815385, 818434, 821509

DAVID O. AND MARYANN ZUNKER  
 DOCUMENT 873154

RANDALL D. AND SUSAN E. VANMAANEN  
 DOCUMENT 880569

DAVID C. WISSINK  
 DOCUMENT 636840

STA. 15+196.995 C.T.H. A =  
 STA. 3+000.000 BRITISH LANE  
 N 7029.720  
 E 3799.090

DANIEL E. HOLST  
 DOCUMENT 697164  
 LOT 1 OF  
 CSM NO. 4650

C.T.H. A R/W R  
 AND CONSTRUCTION R

KATHLEEN M. OMORI  
 DOCUMENT 1124971  
 LOT 4 OF  
 CSM NO. 4473

CHARLES S. AND MARY L. ZEMLO  
 DOCUMENT 749614

OPAL J. MAYNE  
 V. 1317, P. 176

LESLIE L. AND LORRAINE E. CLARK  
 DOCUMENT 432460

RICHARD AND LOIS BREAKER-PURCAHSER  
 BRUCE S. BENNETT-VENDOR  
 DOCUMENT 1016933

NICHOLAS KLINGBEIL  
 DOCUMENT 619311

ROBERT C., SR. AND JANE L. LINCOLN  
 DOCUMENT 708986 AND 709268

SHIRLEY J. BECK  
 DOCUMENT 843504  
 EASEMENT-AMERITECH  
 V. 169, P. 355

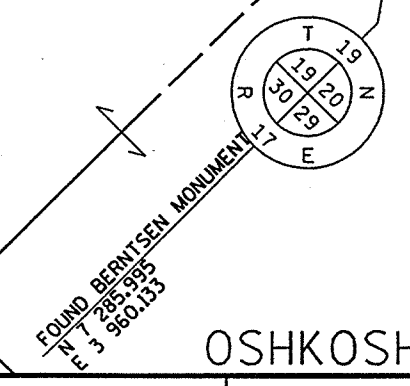
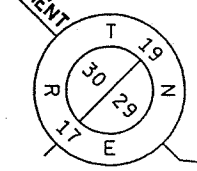
SE-NE 30-19-17

CURVE DATA	
P.I.	14+808.488
N 6	800.552
E 3	472.939
Δ	07°11'32"
T	65.847 m (206.19')
L	125.529 m (411.84')
E	1.973 m (6.47')
R	1000.000 m (3280.83')
P.C.	14+745.641
P.T.	14+871.170
L.C.C.	133.639 m (438.45')
L.C.B.	N44°14'52"E

CURVE DATA	
P.I.	15+218.880
N 7	034.442
E 3	810.359
Δ	10°48'07"
T	75.636 m (248.15')
L	150.823 m (494.83')
E	3.568 m (11.71')
R	800.00 m (2624.67')
P.C.	15+143.244
P.T.	15+294.067
L.C.C.	133.639 m (438.45')
L.C.B.	N44°14'52"E

CURVE DATA	
P.I.	15+436.309
N 7	189.925
E 3	962.989
Δ	04°45'18"
T	83.040 m (272.44')
L	165.985 m (544.57')
E	1.723 m (5.65')
R	2000.000 m (6561.67')
P.C.	15+353.269
P.T.	15+519.254
L.C.C.	133.639 m (438.45')
L.C.B.	N44°14'52"E

FOUND BERNTSEN MONUMENT  
 N 7 285.995  
 E 3 952.506



OSHKOSH

STA. 14+620  
 MATCH LINE

MATCH LINE  
 STA. 15+340

ORIGINATOR: PW10800...  
 LEVELS ON: 1.0, 3.4, 5.7, 9.9, 10.11, 12.13, 14.15, 16.17, 18.19, 20.21, 22.23, 24.25, 26.27, 28.29, 30.31, 32.33, 34.35, 36.37, 38.39, 40.41, 42.43, 44.45, 46.47, 48.49, 50.51, 52.53, 54.55, 56.57, 58.59.

REVISION DATE	DATE 04-02-2002	SCALE, METERS 0 50 100	HWY: C.T.H. A	FEDERAL PROJECT NO:	SHEET NO: 4.7 M
GRID FACTOR			COUNTY: WINNEBAGO	STATE R/W PROJECT NO: 4627-01-00	

# BEARINGS, DISTANCES AND COORDINATES FOR PLAT SHEET 4.7

## PARCELS 12,13,15-19,25-PART OF 28 AND 29

COORDINATES		
POINT NUMBER	N	E
70	6475.366	3150.647
9136	6489.755	3150.752
9319	6538.458	3151.110
9317	6716.228	3349.092
9273	6738.488	3382.863
PC C20	6768.981	3416.823
PT C20	6785.257	3435.401
PC C21	6807.012	3456.937
PT C21	6850.327	3514.906
PC C22	7005.325	3738.512
PT C22	7038.563	3783.006
PC C23	7051.780	3797.463
PT C23	7091.300	3840.780
9158	7104.560	3855.369
PC C30	7142.574	3892.685
PT C30	7205.228	3951.577
9297	7211.829	3958.894
9298	7212.401	3959.417
PC C34	7168.803	3958.993
PT C34	7121.559	3914.094
PC C43	7079.311	3872.621
PT C43	7041.063	3832.422
3215	6997.805	3830.814
PC C44	7001.218	3778.713
PT C44	6982.538	3753.005
9151	6844.732	3553.863
PC C52	6824.849	3532.566
PT C52	6748.147	3435.530
3147	6530.585	3193.231
3145	6502.372	3164.805

COURSE TABLE		
COURSE	BEARING	DISTANCE
70-9136	N 00°25'12" E	14.389 m ( 47.21' )
9136-9319	N 00°25'12" E	48.705 m ( 159.79' )
9319-9317	N 48°04'45" E	266.081 m ( 872.97' )
9317-9273	N 56°36'36" E	40.447 m ( 132.70' )
9273-PC C20	N 48°04'45" E	45.641 m ( 149.74' )
PC C20-PT C20	N 48°46'37" E	24.700 m ( 81.04' )
PT C20-PC C21	N 44°42'38" E	30.611 m ( 100.43' )
PC C21-PT C21	N 53°13'57" E	72.365 m ( 237.42' )
PT C21-PC C22	N 55°16'17" E	272.074 m ( 892.63' )
PC C22-PT C22	N 53°14'20" E	55.538 m ( 182.21' )
PT C22-PC C23	N 47°33'51" E	19.588 m ( 64.26' )
PC C23-PT C23	N 47°37'32" E	58.636 m ( 192.38' )
PT C23-9158	N 47°43'44" E	19.715 m ( 64.68' )
9158-PC C30	N 44°28'10" E	53.269 m ( 174.77' )
PC C30-PT C30	N 43°13'38" E	85.987 m ( 282.11' )
PT C30-9297	N 47°56'47" E	9.854 m ( 32.33' )
9297-9298	N 42°25'58" E	0.776 m ( 2.55' )
9298-PC C34	S 00°33'26" W	43.600 m ( 143.04' )
PC C34-PT C34	S 43°32'31" W	65.177 m ( 213.83' )
PT C34-PC C43	S 44°28'10" W	59.202 m ( 194.23' )
PC C43-PT C43	S 46°25'30" W	55.487 m ( 182.04' )
PT C43-3215	S 02°07'44" W	43.288 m ( 142.02' )
3215-PC C44	N 86°15'09" W	52.213 m ( 171.30' )
PC C44-PT C44	S 53°59'50" W	31.778 m ( 104.26' )
PT C44-9151	S 55°19'01" W	242.173 m ( 794.53' )
9151-PC C52	S 46°58'00" W	29.135 m ( 95.59' )
PC C52-PT C52	S 51°40'31" W	123.691 m ( 405.81' )
PT C52-3147	S 48°04'45" W	325.641 m ( 1068.37' )
3147-3145	S 45°13'00" W	40.050 m ( 131.40' )
3145-9136	S 48°04'45" W	18.885 m ( 61.96' )

### PARCEL 12,13 AND 15 T.L.E.

COORDINATES		
POINT NUMBER	N	E
70	6475.366	3150.647
9268	6511.401	3150.911
3069	6728.071	3392.217
9273	6738.488	3382.863
PC C20	6768.981	3416.823
PT C20	6785.257	3435.401
PC C53	6800.457	3450.448
PT C53	6770.469	3415.487
9277	6731.068	3371.606

COURSE TABLE		
COURSE	BEARING	DISTANCE
70-9268	N 00°25'12" E	36.036 m ( 118.23' )
9268-3069	N 48°04'45" E	324.306 m ( 1063.99' )
3069-9273	N 41°55'15" W	14.000 m ( 45.93' )
9273-PC C20	N 48°04'45" E	45.641 m ( 149.74' )
PC C20-PT C20	N 48°46'37" E	24.700 m ( 81.04' )
PT C20-PC C53	N 44°42'38" E	21.388 m ( 70.17' )
PC C53-PT C53	S 49°22'41" W	46.061 m ( 151.12' )
PT C53-9277	S 48°04'45" W	58.974 m ( 193.48' )
9277-9273	N 56°36'36" E	13.482 m ( 44.23' )

### PARCELS 17, 20-25 T.L.E.

COORDINATES		
POINT NUMBER	N	E
70	6475.366	3150.647
9268	6511.401	3150.911
PC C68	6758.564	3426.176
PT C68	6936.355	3524.591
9327	6840.258	3530.221
9000	6829.574	3537.627
PC C54	6980.669	3755.603
PT C54	7000.903	3783.511
PC C44	7001.218	3778.713
PT C44	6982.538	3753.005
9151	6844.732	3553.863

COURSE TABLE		
COURSE	BEARING	DISTANCE
70-9268	N 00°25'12" E	36.036 m ( 118.23' )
9268-PC C68	N 48°04'45" E	369.946 m ( 1213.73' )
PC C68-PT C68	N 51°40'31" E	125.447 m ( 411.57' )
PT C68-9327	N 55°16'17" E	6.851 m ( 22.48' )
9327-9000	S 34°43'43" E	13.000 m ( 42.65' )
9000-PC C54	N 55°16'17" E	265.223 m ( 870.15' )
PC C54-PT C54	N 54°03'24" E	34.472 m ( 113.10' )
PT C54-PC C44	N 86°15'09" W	4.809 m ( 15.78' )
PC C44-PT C44	S 53°59'50" W	31.778 m ( 104.26' )
PT C44-9151	S 55°19'01" W	242.173 m ( 794.53' )
9151-9000	S 47°58'00" W	22.212 m ( 72.87' )

### PARCELS 5-19, 25-PART OF 28 AND 29

CURVE TABLE										
CURVE	L.C.B.	L.C.	L.	R.	P.C.		RADIUS		P.T.	
					N	E	N	E	N	E
C20	N 48°46'37" E	24.700 m ( 81.04' )	24.700 m ( 81.04' )	1014.000 m ( 3326.77' )	6768.981	3416.823	6014.496	4094.280	6785.257	3435.401
C21	N 53°13'57" E	72.365 m ( 237.42' )	72.380 m ( 237.47' )	1017.000 m ( 3336.61' )	6807.012	3456.937	6014.496	4094.280	6850.327	3514.906
C22	N 53°14'20" E	55.538 m ( 182.21' )	55.550 m ( 182.25' )	783.000 m ( 2568.89' )	7005.325	3738.512	7648.841	3292.445	7038.563	3783.006
C23	N 47°37'32" E	58.636 m ( 192.37' )	58.650 m ( 192.42' )	782.000 m ( 2565.61' )	7051.780	3797.463	7648.841	3292.445	7091.300	3840.780
C30	N 43°13'38" E	85.987 m ( 282.11' )	85.994 m ( 282.13' )	1983.000 m ( 6205.89' )	7142.574	3892.685	8531.724	2477.569	7205.228	3951.577
C34	S 43°32'31" W	65.177 m ( 213.83' )	65.180 m ( 213.84' )	2013.000 m ( 6604.32' )	7168.803	3958.993	8531.724	2477.569	7121.559	3914.094
C43	S 46°25'30" W	55.487 m ( 182.04' )	55.498 m ( 182.08' )	813.000 m ( 2667.32' )	7079.311	3872.621	7648.841	3292.445	7041.063	3832.422
C44	S 53°59'50" W	31.778 m ( 104.26' )	31.781 m ( 104.27' )	689.886 m ( 2263.40' )	7001.218	3778.713	7549.839	3360.434	6982.538	3753.005
C52	S 51°40'31" W	123.691 m ( 405.81' )	123.772 m ( 406.08' )	986.000 m ( 3234.90' )	6824.849	3532.566	6014.496	4094.280	6748.147	3435.530
C54	N 54°03'24" E	34.472 m ( 113.10' )	34.474 m ( 113.10' )	813.000 m ( 2667.32' )	6980.669	3755.603	7648.841	3292.445	7000.903	3783.511
C68	N 51°40'31" E	125.447 m ( 411.59' )	125.529 m ( 411.59' )	1000.000 m ( 3280.83' )	6758.564	3426.176	6014.496	4094.280	6836.355	3524.591

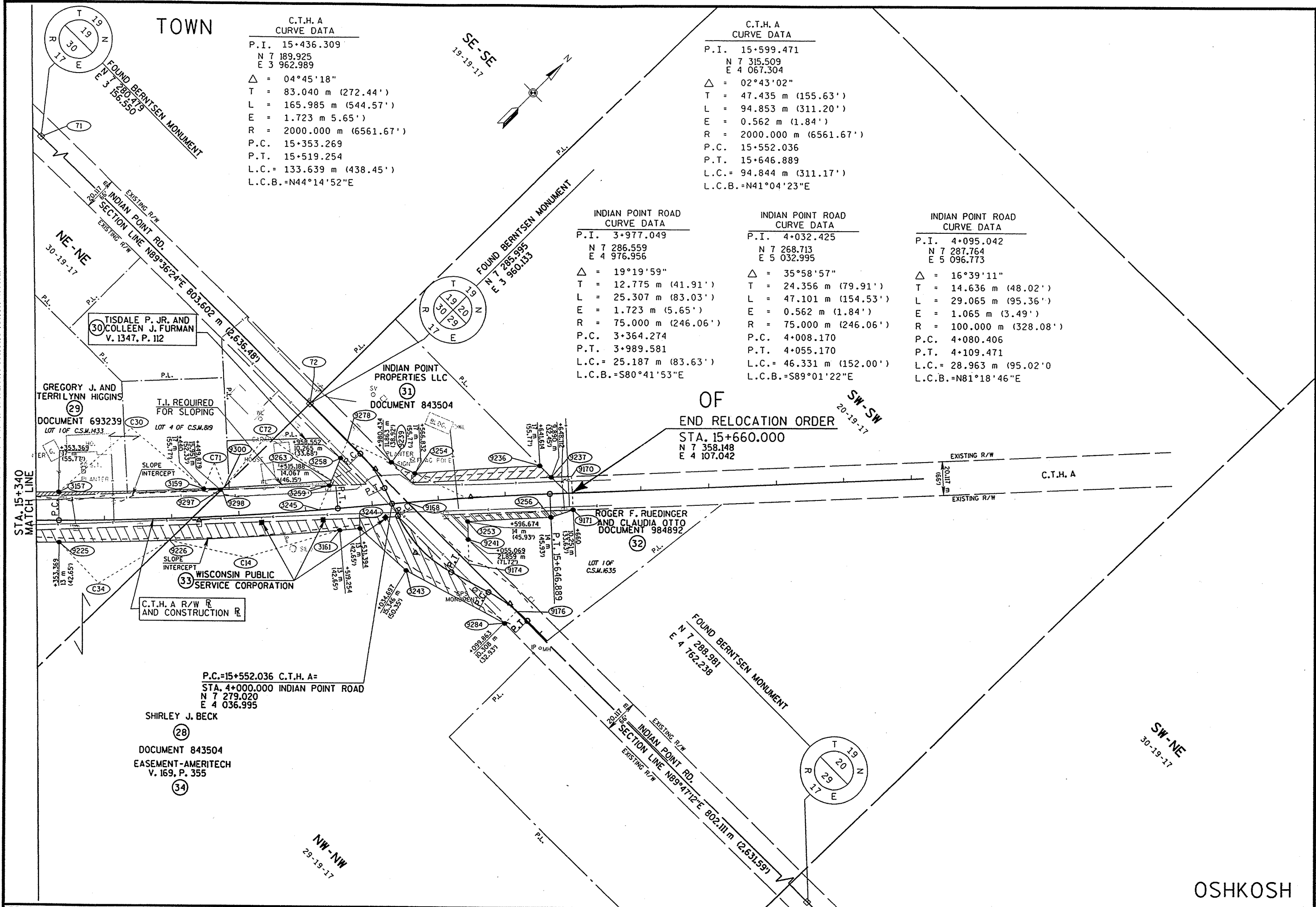
REVISION DATE	DATE	SCALE, METERS	HWY: C.T.H. A	FEDERAL PROJECT NO:
	04-02-2002	0	COUNTY: WINNEBAGO	STATE R/W PROJECT NO: 4627-01-00
	GRID FACTOR			SHEET NO: 4.8

PEN TABLE = #Plot+LASER#(level),TBI  
 DATE OF PLOT = 4/6/02  
 PLOT NA  
 DGN NA  
 ORIGINATOR: 1, 2, 3, 4, 5, 6, 7, 8, 9, 10, 11, 12, 13, 14, 15, 16, 17, 18, 19, 20, 21, 22, 23, 24, 25, 26, 27, 28, 29, 30, 31, 32, 33, 34, 35, 36, 37, 38, 39, 40, 41, 42, 43, 44, 45, 46, 47, 48, 49, 50, 51, 52, 53, 54, 55, 56, 57, 58, 59, 60, 61, 62, 63  
 FILE NAME:



PEN TABLE = #PIOT+LASER+LEVEL.TBI  
 DATE OF PLOT = 4/5/02  
 PLOT NA  
 DGN NA

ORIGINATOR: RWPTLDGN ON = 1-63  
 LEVELS ON = 1, 2, 3, 4, 5, 6, 7, 8, 9, 10, 11, 12, 13, 14, 15, 16, 17, 18, 19, 20, 21, 22, 23, 24, 25, 26, 27, 28, 29, 30, 31, 32, 33, 34, 35, 36, 37, 38, 39, 40, 41, 42, 43, 44, 45, 46, 47, 48, 49, 50, 51, 52, 53, 54, 55, 56, 57, 58, 59, 60, 61, 62, 63



C.T.H. A CURVE DATA

P.I.	15+436.309
N	7 189.925
E	3 962.989
Δ	04°45'18"
T	83.040 m (272.44')
L	165.985 m (544.57')
E	1.723 m (5.65')
R	2000.000 m (6561.67')
P.C.	15+353.269
P.T.	15+519.254
L.C.	133.639 m (438.45')
L.C.B.	=N44°14'52"E

C.T.H. A CURVE DATA

P.I.	15+599.471
N	7 315.509
E	4 067.304
Δ	02°43'02"
T	47.435 m (155.63')
L	94.853 m (311.20')
E	0.562 m (1.84')
R	2000.000 m (6561.67')
P.C.	15+552.036
P.T.	15+646.889
L.C.	94.844 m (311.17')
L.C.B.	=N41°04'23"E

INDIAN POINT ROAD CURVE DATA

P.I.	3+977.049
N	7 286.559
E	4 976.956
Δ	19°19'59"
T	12.775 m (41.91')
L	25.307 m (83.03')
E	1.723 m (5.65')
R	75.000 m (246.06')
P.C.	3+364.274
P.T.	3+989.581
L.C.	25.187 m (83.63')
L.C.B.	=S80°41'53"E

INDIAN POINT ROAD CURVE DATA

P.I.	4+032.425
N	7 268.713
E	5 032.995
Δ	35°58'57"
T	24.356 m (79.91')
L	47.101 m (154.53')
E	0.562 m (1.84')
R	75.000 m (246.06')
P.C.	4+008.170
P.T.	4+055.170
L.C.	46.331 m (152.00')
L.C.B.	=S89°01'22"E

INDIAN POINT ROAD CURVE DATA

P.I.	4+095.042
N	7 287.764
E	5 096.773
Δ	16°39'11"
T	14.636 m (48.02')
L	29.065 m (95.36')
E	1.065 m (3.49')
R	100.000 m (328.08')
P.C.	4+080.406
P.T.	4+109.471
L.C.	28.963 m (95.02')
L.C.B.	=N81°18'46"E

STA. 15+340  
MATCH LINE

OF  
END RELOCATION ORDER  
STA. 15+660.000  
N 7 358.148  
E 4 107.042

P.C.=15+552.036 C.T.H. A=  
STA. 4+000.000 INDIAN POINT ROAD  
N 7 279.020  
E 4 036.995

SHIRLEY J. BECK  
DOCUMENT 843504  
EASEMENT-AMERITECH  
V. 169, P. 355

OSHKOSH

REVISION DATE	DATE 04-02-2002	SCALE, METERS 0 50 100	HWY: C.T.H. A	FEDERAL PROJECT NO:
GRID FACTOR			COUNTY: WINNEBAGO	STATE R/W PROJECT NO: 4627-01-00
FILE NAME:				SHEET NO: 4.9 M

# BEARINGS, DISTANCES AND COORDINATES FOR PLAT SHEET 4.9

## PARCELS 12,13,15-19,25-PART OF 28 AND 29

COORDINATES		
POINT NUMBER	N	E
70	6475.366	3150.647
9136	6489.755	3150.752
9319	6538.458	3151.110
9317	6716.228	3349.092
9273	6738.488	3382.863
PC C20	6768.981	3416.823
PT C20	6785.257	3435.401
PC C21	6807.012	3456.937
PT C21	6850.327	3514.906
PC C22	7005.325	3738.512
PT C22	7038.563	3783.006
PC C23	7051.780	3797.463
PT C23	7091.300	3840.780
9158	7104.560	3855.369
PC C30	7142.574	3892.685
PT C30	7205.228	3951.577
9297	7211.829	3958.894
9298	7212.401	3959.417
PC C34	7168.803	3958.993
PT C34	7121.559	3914.094
PC C43	7079.311	3872.621
PT C43	7041.063	3832.422
3215	6997.805	3830.814
PC C44	7001.218	3778.713
PT C44	6982.538	3753.005
9151	6844.732	3553.863
PC C52	6824.849	3532.566
PT C52	6748.147	3435.530
3147	6530.585	3193.231
3145	6502.372	3164.805

COURSE TABLE		
COURSE	BEARING	DISTANCE
70-9136	N 00°25'12" E	14.389 m ( 47.21' )
9136-9319	N 00°25'12" E	48.705 m ( 159.79' )
9319-9317	N 48°04'45" E	266.081 m ( 872.97' )
9317-9273	N 56°36'36" E	40.447 m ( 132.70' )
9273-PC C20	N 48°04'45" E	45.641 m ( 149.74' )
PC C20-PT C20	N 48°46'37" E	24.700 m ( 81.04' )
PT C20-PC C21	N 44°42'38" E	30.611 m ( 100.43' )
PC C21-PT C21	N 53°13'57" E	72.365 m ( 237.42' )
PT C21-PC C22	N 55°16'17" E	272.074 m ( 892.63' )
PC C22-PT C22	N 53°14'20" E	55.538 m ( 182.21' )
PT C22-PC C23	N 47°33'51" E	19.588 m ( 64.26' )
PC C23-PT C23	N 47°37'32" E	58.636 m ( 192.38' )
PT C23-9158	N 47°43'44" E	19.715 m ( 64.68' )
9158-PC C30	N 44°28'10" E	53.269 m ( 174.77' )
PC C30-PT C30	N 43°13'38" E	85.987 m ( 282.11' )
PT C30-9297	N 47°56'47" E	9.854 m ( 32.33' )
9297-9298	N 42°25'58" E	0.776 m ( 2.55' )
9298-PC C34	S 00°33'26" W	43.600 m ( 143.04' )
PC C34-PT C34	S 43°32'31" W	65.177 m ( 213.83' )
PT C34-PC C43	S 44°28'10" W	59.202 m ( 194.23' )
PC C43-PT C43	S 46°25'30" W	55.487 m ( 182.04' )
PT C43-3215	S 02°07'44" W	43.288 m ( 142.02' )
3215-PC C44	N 86°15'09" W	52.213 m ( 171.30' )
PC C44-PT C44	S 53°59'50" W	31.778 m ( 104.26' )
PT C44-9151	S 55°19'01" W	242.173 m ( 794.53' )
9151-PC C52	S 47°58'00" W	29.135 m ( 95.59' )
PC C52-PT C52	S 51°40'31" W	123.691 m ( 405.81' )
PT C52-3147	S 48°04'45" W	325.641 m ( 1068.37' )
3147-3145	S 45°13'00" W	40.050 m ( 131.40' )
3145-9136	S 48°04'45" W	18.885 m ( 61.96' )

## PARCELS PART OF 28 AND 30

COORDINATES		
POINT NUMBER	N	E
72	7285.995	3960.133
9278	7286.117	3993.002
3259	7259.688	4002.645
9298	7212.401	3959.417
PC C14	7168.803	3958.993
PT C14	7245.496	4026.049
3244	7254.834	4033.805
3243	7257.005	4071.171
9284	7276.588	4135.175
9176	7286.646	4135.137

COURSE TABLE		
COURSE	BEARING	DISTANCE
72-9278	N 89°47'12" E	32.869 m ( 107.84' )
9278-3259	S 20°02'44" E	28.134 m ( 92.30' )
3259-9298	S 42°25'58" W	64.067 m ( 210.19' )
9298-PC C14	S 00°33'26" W	43.600 m ( 143.04' )
PC C14-PT C14	N 41°09'52" E	101.874 m ( 334.23' )
PT C14-3244	N 39°42'52" E	12.139 m ( 39.83' )
3244-3243	N 86°40'31" E	37.428 m ( 122.80' )
3243-9284	N 72°59'16" E	66.933 m ( 219.60' )
9284-9176	N 00°12'48" W	10.058 m ( 33.00' )
9176-9278	S 89°47'12" W	142.137 m ( 466.33' )

## PARCELS 31 AND 32

COORDINATES		
POINT NUMBER	N	E
72	7285.995	3960.133
9278	7286.117	3993.002
9174	7286.499	4095.421
3253	7303.853	4076.465
3256	7341.074	4109.642
9171	7353.281	4115.721
9170	7366.854	4100.873
9237	7358.095	4092.835
9236	7358.059	4083.178
3254	7301.325	4033.494

COURSE TABLE		
COURSE	BEARING	DISTANCE
72-9278	N 89°47'12" E	32.869 m ( 107.84' )
9278-9174	N 89°47'12" E	102.420 m ( 336.02' )
9174-3253	N 47°31'37" W	25.700 m ( 84.32' )
3253-3256	N 41°42'45" E	49.862 m ( 163.59' )
3256-9171	N 26°28'24" E	13.636 m ( 44.74' )
9171-9170	N 47°34'06" W	20.117 m ( 66.00' )
9170-9237	S 42°32'44" W	11.888 m ( 39.00' )
9237-9236	S 89°47'12" W	9.657 m ( 31.68' )
9236-3254	S 41°12'34" W	75.413 m ( 247.42' )
3254-9278	S 69°24'55" W	43.255 m ( 141.91' )

## PARCEL 29 AND 30 T.L.E.

COORDINATES		
POINT NUMBER	N	E
72	7285.995	3960.133
PC C71	7214.010	3959.433
PT C71	7205.228	3951.577
9297	7211.829	3958.894
3259	7259.688	4002.645
PC C72	7262.874	4001.482

COURSE TABLE		
COURSE	BEARING	DISTANCE
72-PC C71	S 00°33'26" W	71.988 m ( 236.18' )
PC C71-PT C71	S 41°48'53" W	11.783 m ( 38.66' )
PT C71-9297	N 47°56'47" E	9.854 m ( 32.33' )
9297-3259	N 42°25'58" E	64.843 m ( 212.74' )
3259-PC C72	N 20°02'44" W	3.392 m ( 11.13' )
PC C72-PC C71	S 40°42'47" W	64.466 m ( 211.50' )

## PARCELS 12,13,15-19,25,28-32

CURVE TABLE										
CURVE	L.C.B.	L.C.	L.	R.	P.C.		RADIUS		P.T.	
					N	E	N	E	N	E
C14	N 41°09'52" E	101.874 m ( 334.23' )	101.885 m ( 334.27' )	2013.000 m ( 6604.32' )	7168.803	3958.993	8531.724	2477.569	7245.496	4026.049
C20	N 48°46'37" E	24.700 m ( 81.04' )	24.700 m ( 81.04' )	1014.000 m ( 3326.77' )	6768.981	3416.823	6014.496	4094.280	6785.257	3435.401
C21	N 53°13'57" E	72.365 m ( 237.42' )	72.380 m ( 237.47' )	1017.000 m ( 3336.61' )	6807.012	3456.937	6014.496	4094.280	6850.327	3514.906
C22	N 53°14'20" E	55.538 m ( 182.21' )	55.550 m ( 182.25' )	783.000 m ( 2568.89' )	7005.325	3738.512	7648.841	3292.445	7038.563	3783.006
C23	N 47°37'32" E	58.636 m ( 192.37' )	58.650 m ( 192.42' )	782.000 m ( 2565.61' )	7051.780	3797.463	7648.841	3292.445	7091.300	3840.780
C30	N 43°13'38" E	85.987 m ( 282.11' )	85.994 m ( 282.13' )	1983.000 m ( 6205.89' )	7142.574	3892.685	8531.724	2477.569	7205.228	3951.577
C34	S 43°32'31" W	65.177 m ( 213.83' )	65.180 m ( 213.84' )	2013.000 m ( 6604.32' )	7168.803	3958.993	8531.724	2477.569	7121.559	3914.094
C43	S 46°25'30" W	55.487 m ( 182.04' )	55.498 m ( 182.08' )	813.000 m ( 2667.32' )	7079.311	3872.621	7648.841	3292.445	7041.063	3832.422
C44	S 53°59'50" W	31.778 m ( 104.26' )	31.781 m ( 104.27' )	689.886 m ( 2263.40' )	7001.218	3778.713	7549.839	3360.434	6982.538	3753.005
C52	S 51°40'31" W	123.691 m ( 405.81' )	123.772 m ( 406.08' )	986.000 m ( 3234.90' )	6824.849	3532.566	6014.496	4094.280	6748.147	3435.530
C54	N 54°03'24" E	34.472 m ( 113.10' )	34.474 m ( 113.10' )	813.000 m ( 2667.32' )	6980.669	3755.603	7648.841	3292.445	7000.903	3783.511
C68	N 51°40'31" E	125.447 m ( 411.59' )	125.529 m ( 411.59' )	1000.000 m ( 3280.83' )	6758.564	3426.176	6014.496	4094.280	6836.355	3524.591
C71	S 41°48'53" W	11.783 m ( 36.66' )	11.783 m ( 36.66' )	1983.000 m ( 6205.89' )	7214.010	3959.433	8531.724	2477.569	7205.228	3951.577
C72	S 40°42'47" W	64.466 m ( 211.50' )	64.469 m ( 211.51' )	1983.000 m ( 6205.89' )	7262.874	4001.482	8531.724	2477.569	7214.010	3959.433

REVISION DATE	DATE	SCALE, METERS	HWY: C.T.H. A	FEDERAL PROJECT NO:
	04-02-2002	0	COUNTY: WINNEBAGO	STATE R/W PROJECT NO: 4627-01-00
	GRID FACTOR			SHEET NO: 4.10

PEN TABLE = #PIOTLASER#level.tdi  
 DATE OF PLOT = 4/5/02  
 PLOT NA  
 DGN NA

ORIGINATOR: RWPT.DGN ON: 1-53  
 LEVELS ON: 1, 2, 3, 4, 5, 6, 7, 8, 9, 10, 11, 12, 13, 14, 15, 16, 17, 18, 19, 20, 21, 22, 23, 24, 25, 26, 27, 28, 29, 30, 31, 32, 33, 34, 35, 36, 37, 38, 39, 40, 41, 42, 43, 44, 45, 46, 47, 48, 49, 50, 51, 52, 53, 54, 55, 56, 57, 58, 59, 60, 61, 62, 63